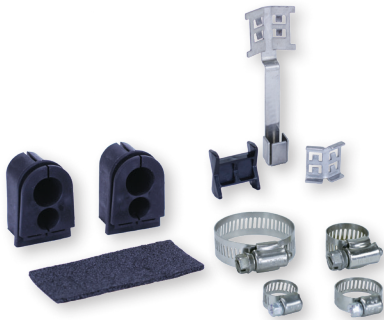
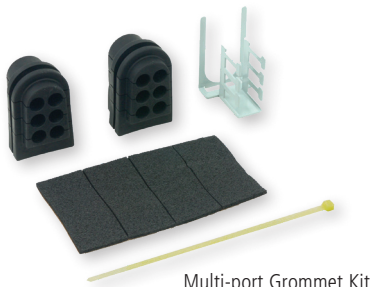


LightGuard® Aerial Splice Closure Accessories



Dual-port Grommet Kit



Multi-port Grommet Kit

Dual- and Multi-port Grommet Kits for LG-400/LG-500/LG-600

For use with the LG-600 Aerial Weathertight Closure. Remove the single-port grommet set from the closure and replace with the multi-port grommet set when drops are required. Retention hardware included.

Ordering Information

DESCRIPTION	AFL NO.
Dual-port Grommet Kit for LG-400/LG-500 Diameter for large port is 0.375" - 0.65"; small port, 0.27" - 0.5"	911386-00-01
Dual Grommet Expansion Kit - Includes: (2) Dual Grommets, (1) CSM retention clamp, cable retention clamp and cable spacer	911406-00-00
Dual Grommet Replacement Kit - Includes: (10) Dual Grommets for the LG-400 Series Closures. Diameter for large port is 0.375" - 0.65"; small port, 0.27" - 0.5"	911495-00-00
Grommet Replacement Kit, Kit - Includes: (10) Standard (single port) Grommets for the LG-400 Series Closures. Diameter from 0.3" - 0.82"	911496-00-00
Grommet Replacement Kit - Includes: (10) LG-600 Grommets Diameter from 0.5" - 1.0"	91918-00
Multi-port Grommet Kit for LG-400/LG-500. Diameter up to 0.365"	FC000573
Multi-port Grommet Kit for LG-600. Diameter from 0.67" to 0.475"	FC000352

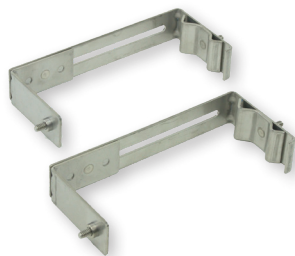


Single-port Grommet Kit for LG-600 FTTx

For use with the LG-600 Aerial Weathertight Closure. Remove the multi-port grommet set from the closure and replace with the single-port grommet set when installing a branch cable. Hardware included.

Ordering Information

DESCRIPTION	AFL NO.
Single-port Grommet Kit for LG-600 FTTx	FC000623
Single Cable Entry Grommet Kit LG-600 Hardware	FC000356



Adjustable Aerial Hanger Brackets

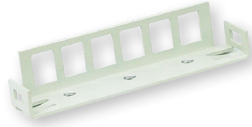
For use with all Aerial Weathertight Closures (LG-410, LG-420, LG-420 FTTx, LG-500, LG-600 and LG-600 FTTx). This pair of hanger brackets is shipped from the factory with all weathertight closures. Purchase separately for closures installed over existing utilities.

Ordering Information

DESCRIPTION	AFL NO.
Adjustable Aerial Hanger Brackets	911497-00-00

continued
→

LightGuard® Aerial Splice Closure Accessories (cont.)

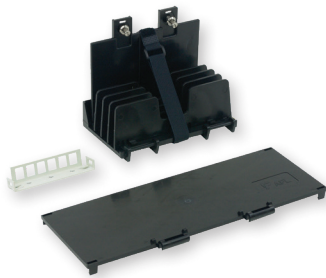


SC 6-Pack Bracket for LG-600

Installs at each end of the stacker module in the LG-600. Allows up to (12) SC connectors or (24) LC connectors (using duplex connectors) to be installed in the closure. Snaps in place or use self-tapping screws to secure.

Ordering Information

DESCRIPTION	AFL NO.
SC 6-Pack Bracket Kit for LG-600	FM001294
SC 6-Pack Adapter Bracket	FM001212



Expansion Kit for LG-600 FTTx

Expansion kit includes a Stacker Tray Module and one LG-600 SC-6-Pack Bracket to allow for up to six SC connections or 12 LC duplex connections. An additional bracket may be used to increase connectivity to 12 SC or 24 LC connections using duplex adapters. Allows increasing splices with LL-2400, LL-2448 and LL-2448-48S splice trays.

Ordering Information

DESCRIPTION	AFL NO.
Expansion Kit for LG-600 FTTx	FC000620

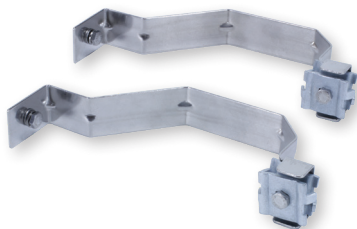


Cable Grounding Harness

For use with all Aerial Weathertight Closures (LG-410, LG-420, LG-420 FTTx, LG-500, LG-600 and LG-600 FTTx).

Ordering Information

DESCRIPTION	AFL NO.
Cable Grounding Harness - Includes: (4) Harness 8" #6 AWG	FC000024



Aerial Hanger Kits

For use with all Aerial Weathertight Closures (LG-410, LG-420, LG-420 FTTx, LG-500, LG-600 and LG-600 FTTx).

Ordering Information

DESCRIPTION	AFL NO.
Extended Aerial Hanger Kit	911497-00-00
Extended Offset Aerial Hanger Kit	91990-00